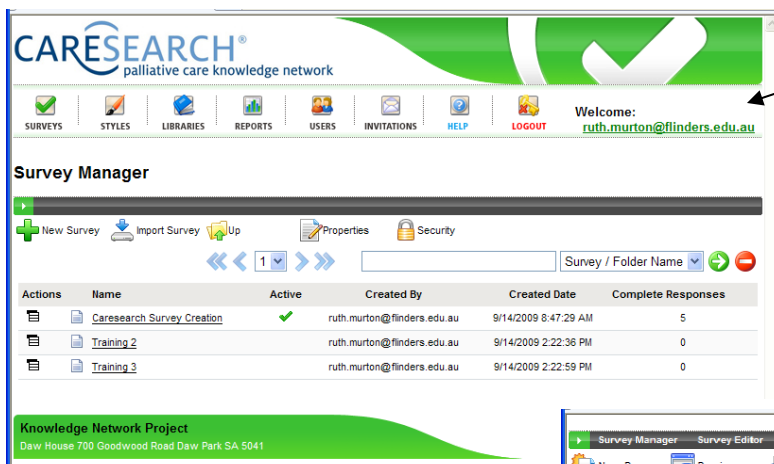


## RESEARCH DATA MANAGEMENT SYSTEM (RDMS)

The CareSearch Research Data Management System (RDMS) has been developed to support research work within palliative care by providing access to a tool that:

- Enables the online design of data collection forms and questionnaires
- Allows for web-based and email-based form completion
- Enables data entry from multiple sites with a single co-ordinating site
- Provides for basic reporting of results with features such as percentages, graphs, and tables
- Allows export of data to other programs such as Excel, Access or SPSS.

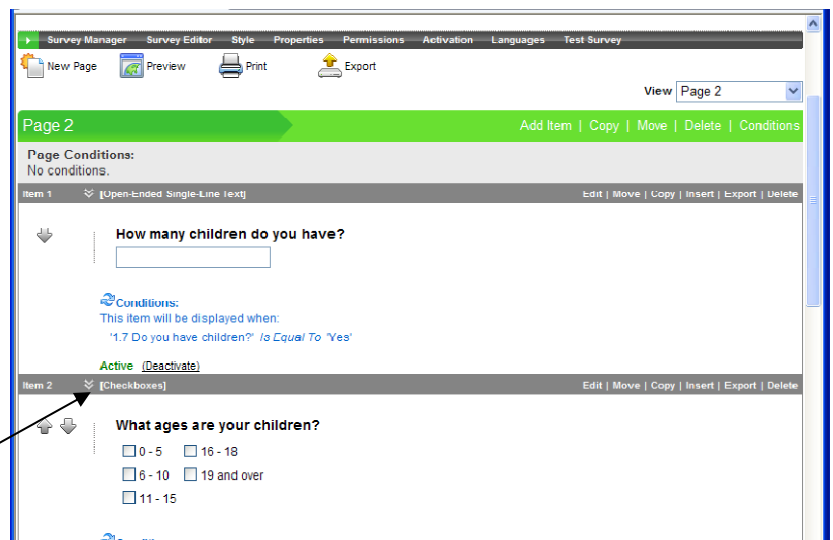
With a user friendly interface, the tool encourages beginning researchers as well as supporting larger multi-site research activities.



This is the main screen for all aspects of managing and creating surveys in the RDMS. Its web-based format allows for simple access to your surveys.

This screenshot shows a survey in its build mode. Choose from a range of question styles including: radio buttons, checkboxes, dropdown lists, matrix questions, rating scales, single and multi-line text answers.

Branching rules can also be set to show questions depending on answers to previous questions.



Select a template style for your survey using one of the pre-existing templates or create your own.

Survey permissions give you the ability to set who can access, build, report and fill in your survey.

Users who have registered with CareSearch and have permission to access your survey can gain access after logging in to CareSearch. This method is often used to ensure your team can access the survey you have built.

You can invite users to fill in your survey via an email invitation system which provides users with a link to follow in order to complete your survey. Or you can add a link to a webpage or electronic newsletter which automatically allows users to access and complete your survey.

What was the date of your visit?  
 date

Which Australian state are you from?  
 v

What is your age group?  
 0 - 15    56 - 65  
 16 - 25    66 - 75  
 26 - 35    76 - 85  
 36 - 45    86 - 95  
 46 - 55    96 +

Reports can be automatically generated giving you instant access to the progress of your survey responses. Or if you would rather use analysis tools, you can export your answers for use in software like Excel, Access or SPSS.

