

Artificial Intelligence: Perspectives and Possibilities in Palliative Care

Professor Jennifer Tieman¹, Dr Seth Nicholls¹

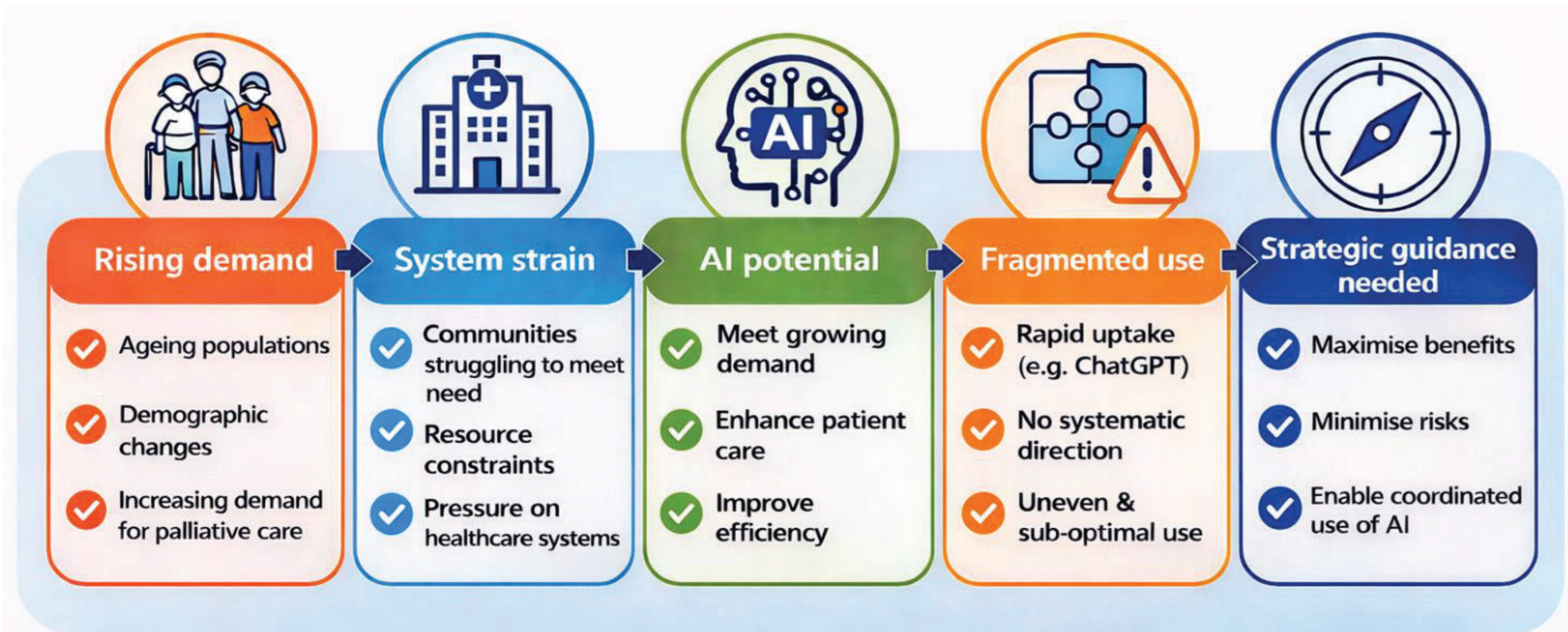
1. Flinders University, College of Nursing and Health Sciences, Research Centre for Palliative Care, Death and Dying, Adelaide, South Australia, Australia.

Background

Globally, communities and healthcare systems are struggling to meet increasing demand for palliative care due to demographic changes and ageing populations. Artificial intelligence (AI) has the potential to help communities and resource constrained healthcare systems meet this demand and deliver higher quality palliative care.

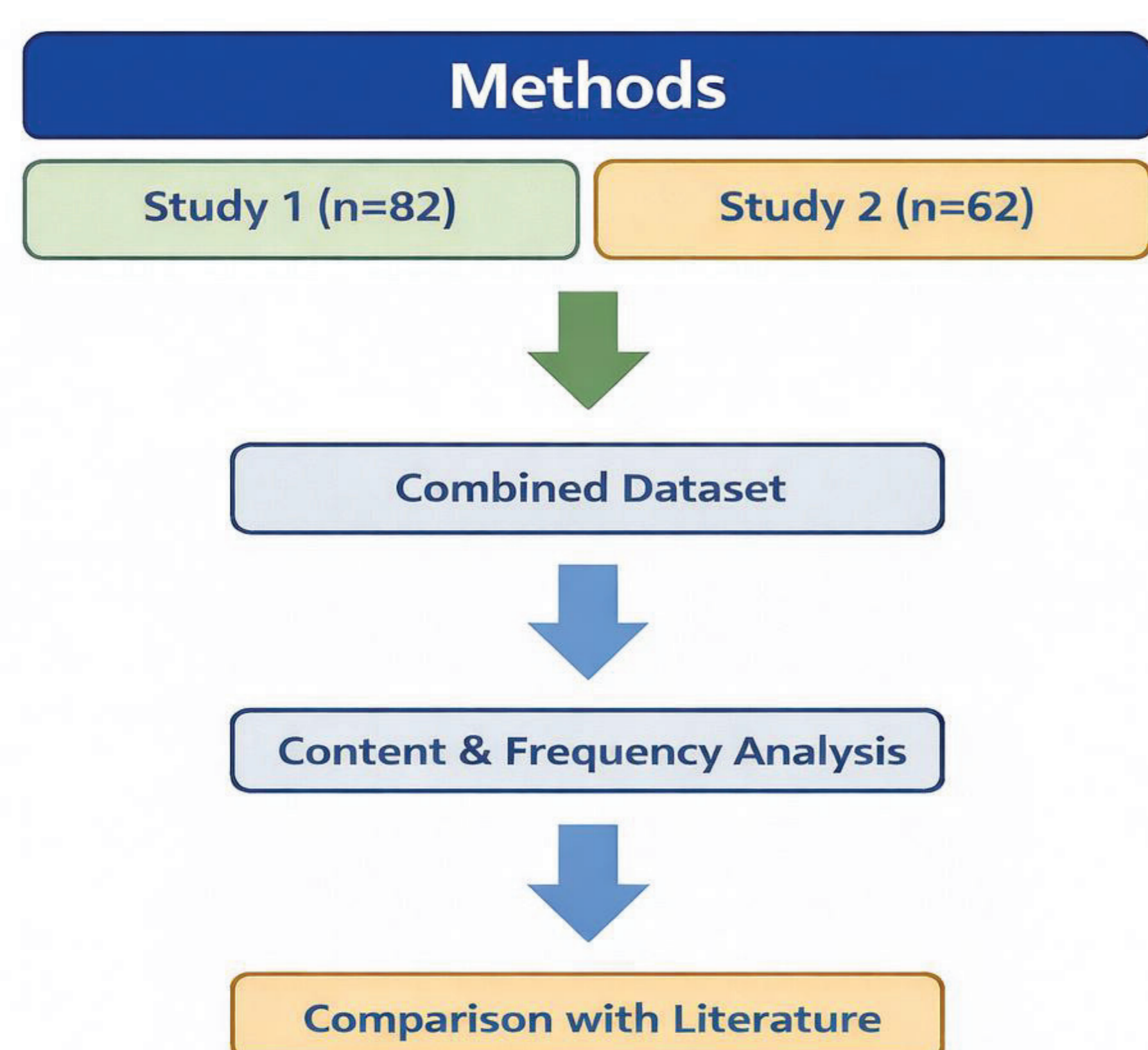
While technologies such as ChatGPT are already being used by clinicians and others to support and guide care, the adoption and use of these new, rapidly developing technologies has not been systematically directed, resulting in uneven, fragmented, and sub-optimal use.

To maximise the benefits and minimise the risks of using artificial intelligence to support the delivery of palliative care, strategic and systematic guidance is needed.



Methods

This study collated and examined findings from AI questions used in two research studies undertaken in 2025. Eighty-two responses were collected in an online survey open to the users of a palliative care website. A further sixty-two responses were collected in a study looking at the use of palliative care clinical evidence in education and practice settings. Content analysis and frequency analysis was undertaken.



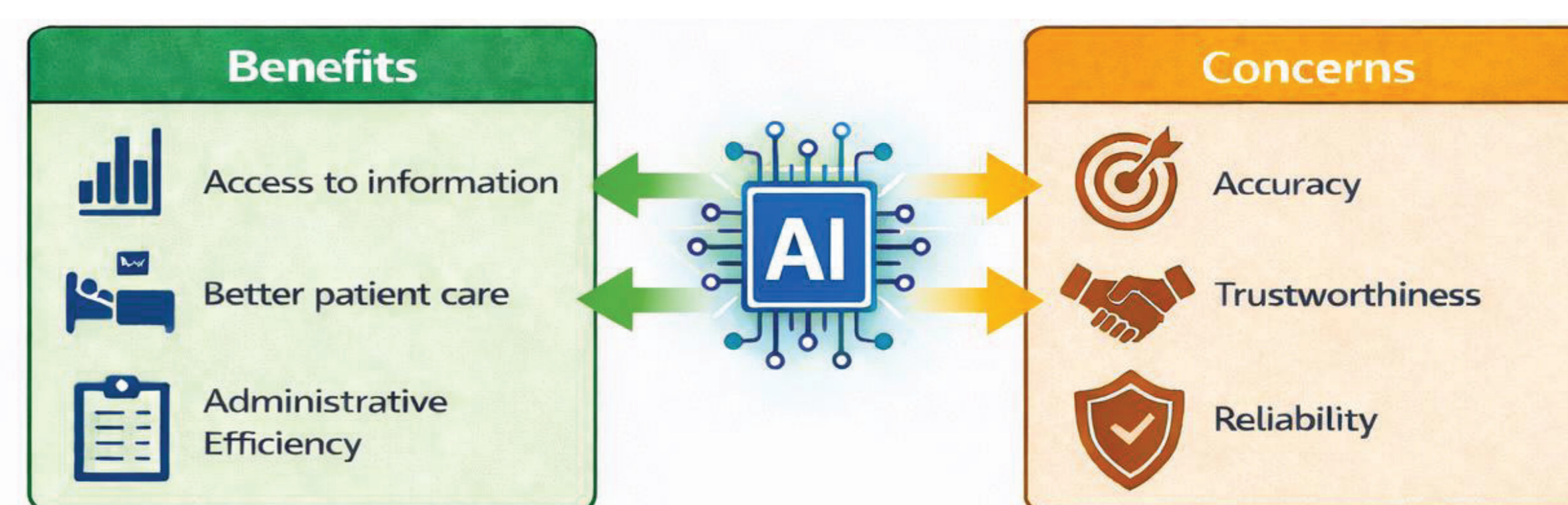
Findings were compared against contemporary peer reviewed literature pertaining to the current and future impact of artificial intelligence on palliative care.

Aim

The aim of this study was to examine reports of the current use of AI in palliative care and respondents' perspectives on the potentials and concerns of its application in palliative care.

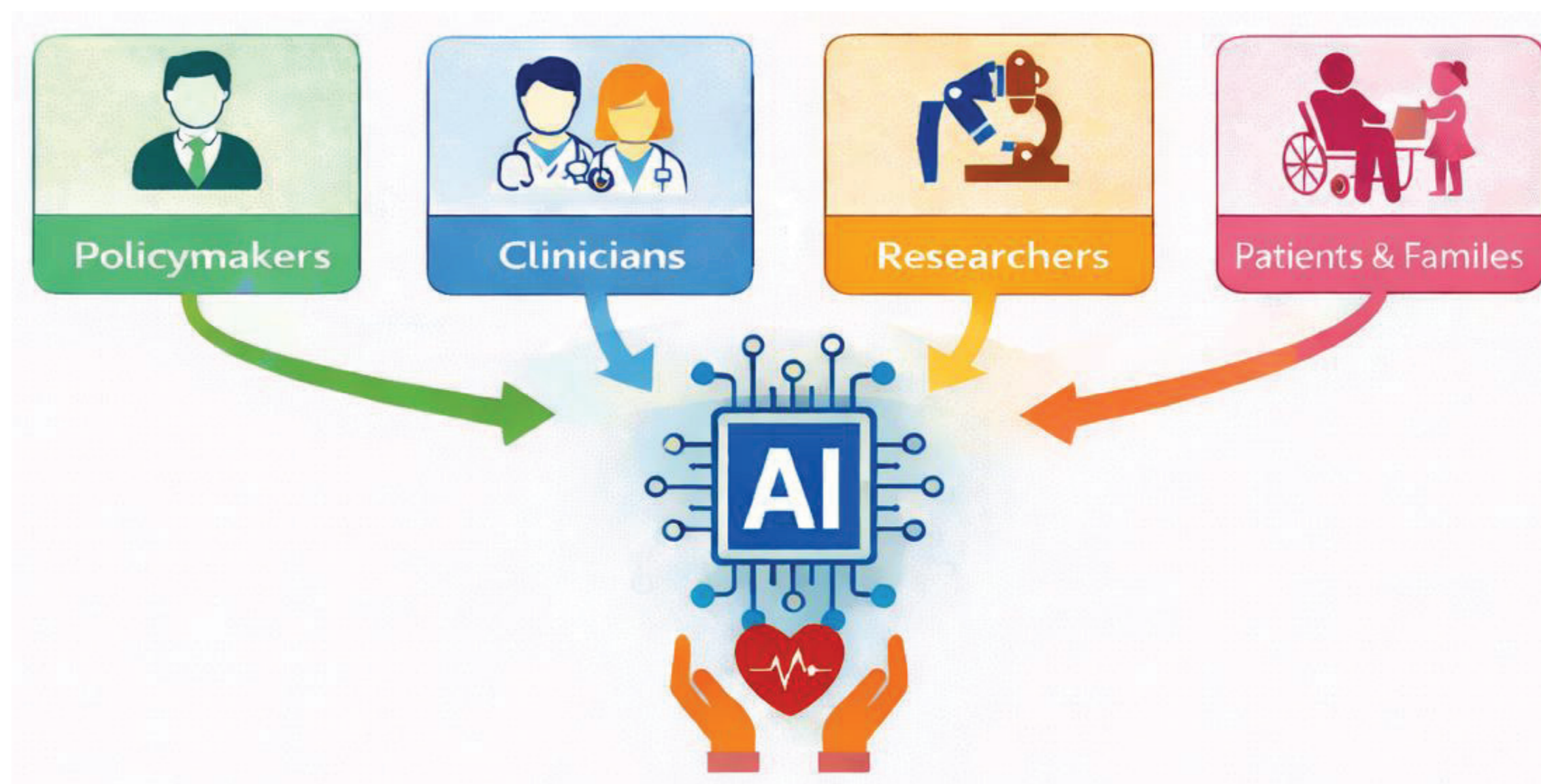
Results

The data collected showed most people were positive or uncertain about the impact. They believed that AI was likely to assist with patient care, access to information, administrative and operational efficiencies, communication, and training. Few described specific palliative care AI applications that were in use. Reported concerns included accuracy, trustworthiness and reliability of AI generated information. There was a view that AI should be thought about as a support tool, not a replacement for people.



Discussion & Implications

The comments from consumers and health professionals show that people are already engaging with, and using AI, in palliative care. The findings provide policymakers, clinicians, researchers and others with an overview of contemporary perspectives and experiences. Given the speed of AI development, the sector needs to grapple with how AI could, and potentially should, be used to deliver better palliative care. User involvement including patients, carers and families in design development processes will be critical to ensure trust, relevance and acceptability of applications.



References

1. Lekadir K, Frangi AF, Porras AR, Glocker B, Cintas C, Langlotz CP, et al. FUTUREAI: international consensus guideline for trustworthy and deployable artificial intelligence in healthcare. *BMJ*. 2025;388:e081554.
2. Ahmad O, Stanley S, Mason S, Nwosu A.C. Artificial Intelligence (AI) in palliative care: the views of palliative care healthcare professionals on the role of new technology in the analysis of healthcare data of people with serious illness. *BMJ supportive & palliative care*. 2022;12(3):p.A32.
3. Australian Government. Australian Government AI technical standard. Digital Transformation Agency. 2025.
4. Bozkurt S, Fereydooni S, Kar I, Chalmers CD, Leslie SL, Pathak R, et al. AI in Palliative Care: A Scoping Review of Foundational Gaps and Future Directions for Responsible Innovation. *Journal of Pain and Symptom Management*. 2025.
5. Nikoloudi M, Mystakidou K. Artificial Intelligence in Palliative Care: A Scoping Review of Current Applications, Challenges, and Future Directions. *American Journal of Hospice and Palliative Medicine*. 2025;10499091251358379.
6. Bressler T, Song J, Kamalumpundi V, Chae S, Song H, Tark A. Leveraging Artificial Intelligence/Machine Learning Models to Identify Potential Palliative Care Beneficiaries: A Systematic Review. *J Gerontol Nurs*. 2025;51(1):714.
7. De Panfilis L, Peruselli C, Tanzi S, Botrugno C. AI-based clinical decisionmaking systems in palliative medicine: ethical challenges. *BMJ Supportive & Palliative Care*. 2023;13(2):183.
8. Schenker Y, Abdullah S, Arnold R, Schmitz KH. Conversational Agents in Palliative Care: Potential Benefits, Risks, and Next Steps. *Journal of Palliative Medicine*. 2024;27(3):296300.